

Fischer Panda B00-300-8-AZ

20 kW / 48 V / 600 rpm Drive



Technical Specifications

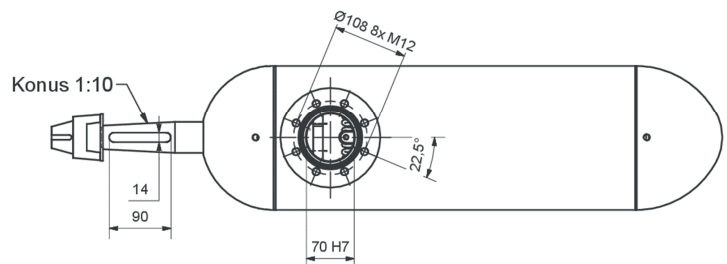
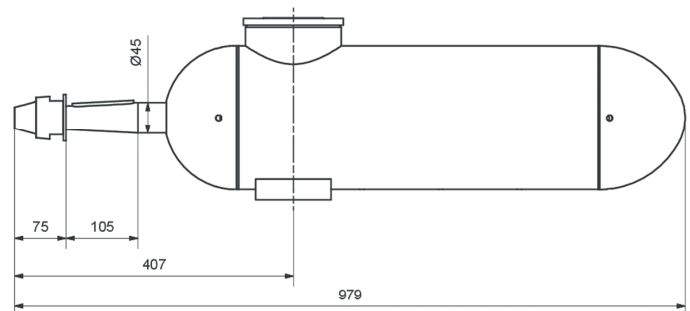
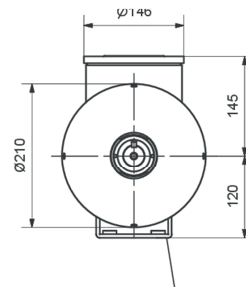
Version	: Pod Motor
Voltage	: 48 V
Shaft Power	: 20 kW
RPM	: 600 rpm
Torque	: 320 Nm
Weight	: 120 kg
Konus	: 1:10 (suitable for standard propellers)

These underwater podded motors require no additional cooling. They can be fitted to an existing rudder or steering system. The motor features a 3-stage sealing ring which provides a high degree of security and the minimum of maintenance. Fischer Panda offers various mountings to suit various hull forms.



Features

- Permanent magnet technology
- Highly efficient
- Brushless
- Stainless steel / aluminium housing
- High torque – even at low speeds
- Easy to maintenance – suited for commercial applications.
- Regeneration
- No oil used for cooling
- Maximum torque – even from the first turn!
- Quiet noise – no gears
- 48 Volt – low voltage
- Integrated thrust bearing
- All performance ratings = on the shaft



Disclaimer: The information contained here is to the best of our knowledge accurate at the date of publication. Please note that the data in this publication reflects the technical state at time of print. Due to our policy of continual product development, we reserve the right to alter technical specifications without notice.