

Fischer Panda B00-150-8-SH

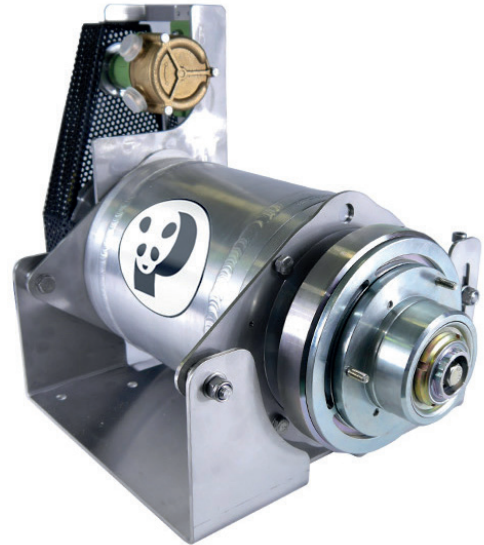
10 kW / 48 V / 600 rpm Drive



Technical Specifications

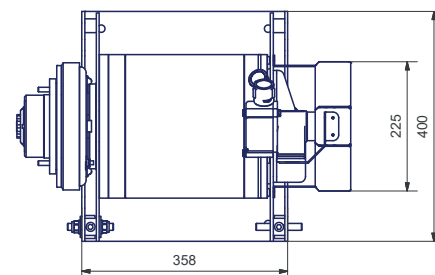
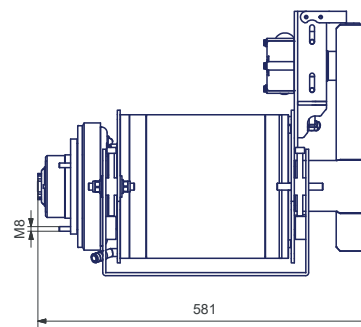
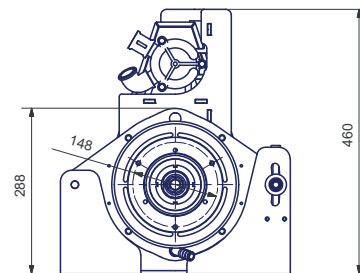
Version	: Shaft Motor (Parallel Hybrid Version)
Voltage	: 48 V
Shaft Power	: 10 kW
RPM	: 600 rpm
Torque	: 160 Nm
Weight	: 71 kg

Our shaft motors are gearless, brushless, sensorless and are not filled with oil. This makes our motors: durable, efficient and low maintenance!



Features

- Permanent magnet technology
- Highly efficient
- Brushless
- Stainless steel / aluminium housing
- High torque – even at low speeds
- Easy to maintenance – suited for commercial applications.
- Regeneration
- No oil used for cooling
- Maximum torque – even from the first turn!
- Quiet noise – no gears
- 48 Volt – low voltage
- Integrated thrust bearing
- All performance ratings = on the shaft



Disclaimer: The information contained here is to the best of our knowledge accurate at the date of publication. Please note that the data in this publication reflects the technical state at time of print. Due to our policy of continual product development, we reserve the right to alter technical specifications without notice.