

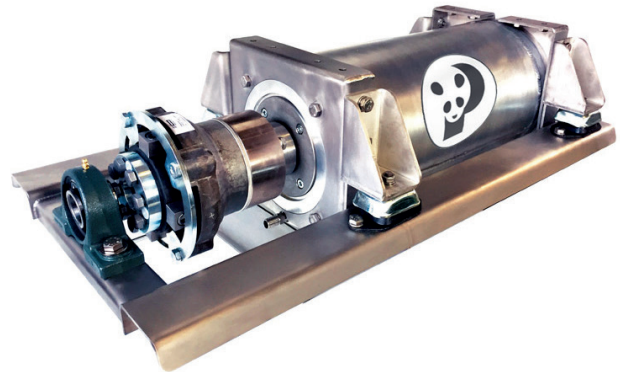
# Fischer Panda B00-360-8-SH

## 50 kW / 360/420 V / 1200 rpm Electric Drive



### Technical Specifications

|             |               |
|-------------|---------------|
| Version     | : Shaft Motor |
| Voltage     | : 360 / 420 V |
| Shaft Power | : 50 kW       |
| RPM         | : 1200 rpm    |
| Torque      | : 398 Nm      |
| Weight      | : 107 kg      |

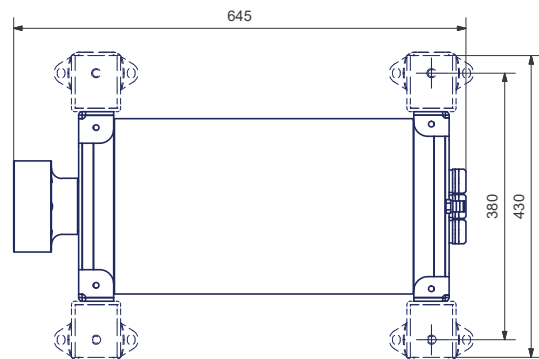
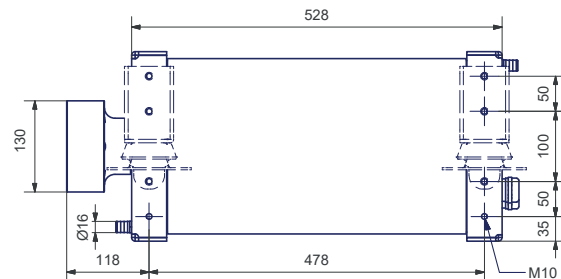
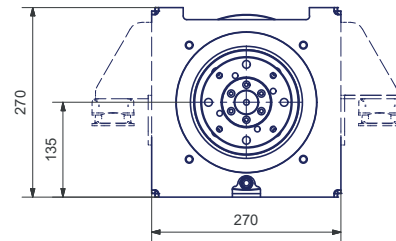


Our heavy-duty shaft motors have a water-cooled double-walled aluminum housing.

They are gearless, brushless, sensorless and are not filled with oil. This makes our motors: durable, efficient and low maintenance!

### Features

- Permanent magnet technology
- Highly efficient
- Brushless
- Stainless steel / aluminium housing
- High torque – even at low speeds
- Easy to maintenance – suited for commercial applications.
- Regeneration
- No oil used for cooling
- Maximum torque – even from the first turn!
- Quiet noise – no gears
- 360 V / 420 V - High Voltage System
- Integrated thrust bearing
- All performance ratings = on the shaft



Disclaimer: The information contained here is to the best of our knowledge accurate at the date of publication. Please note that the data in this publication reflects the technical state at time of print. Due to our policy of continual product development, we reserve the right to alter technical specifications without notice.