

# Fischer Panda B00-360-8-AZ HV

50/80 kW / 420 V / 1200/1900 rpm Electric Drive



## Technical Specifications

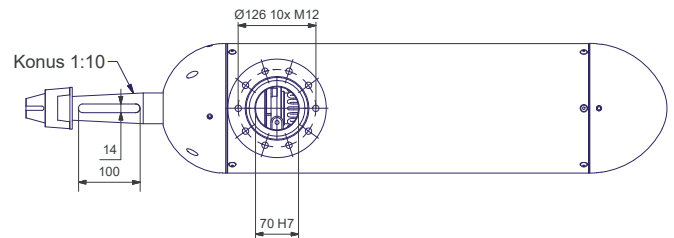
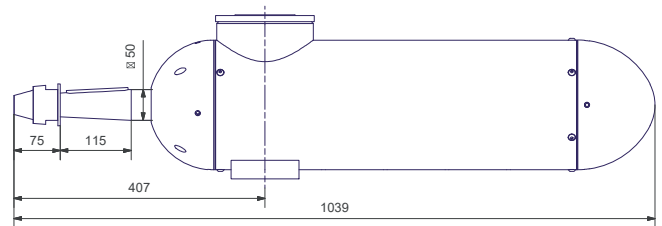
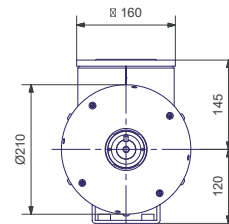
|             |  |
|-------------|--|
| Version     | : Shaft Motor                          |
| Voltage     | : 420 V                                |
| Shaft Power | : 50 kW / 1200 rpm<br>80 kW / 1900 rpm |
| Torque      | : 397 Nm                               |
| Weight      | : 138 kg                               |
| Konus       | : 1:10                                 |



These underwater podded motors require no additional cooling. They can be fitted to an existing rudder or steering system. The motor features a 3-stage sealing ring which provides a high degree of security and the minimum of maintenance. Fischer Panda offers various mountings to suit various hull forms.

## Features

- Permanent magnet technology
- Highly efficient
- Brushless
- Stainless steel / aluminium housing
- High torque – even at low speeds
- Easy to maintenance – suited for commercial applications.
- Regeneration
- No oil used for cooling
- Maximum torque – even from the first turn!
- Quiet noise – no gears
- 420 V - High Voltage System
- Integrated thrust bearing
- All performance ratings = on the shaft



Disclaimer: The information contained here is to the best of our knowledge accurate at the date of publication. Please note that the data in this publication reflects the technical state at time of print. Due to our policy of continual product development, we reserve the right to alter technical specifications without notice.